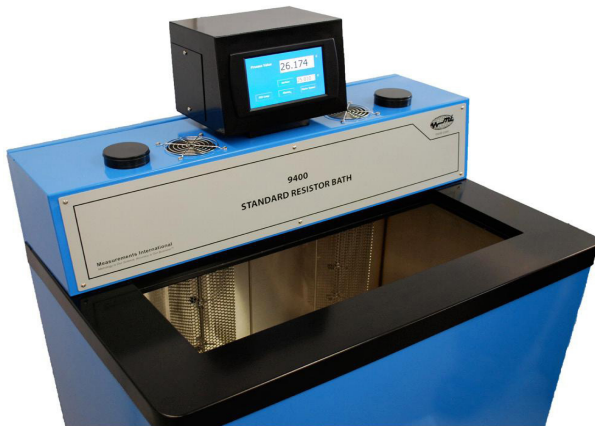


>185.65546 67816.122387 977  
>198.65546 65612.232829 955  
>198.65546 65612.232829 955  
>152.698016 68818.282399 92356  
>198.643636 78617.732289 783  
>124.634546 78672.237779 683  
>458.11142 83417.782397 876  
>145.523286 64486.222689 986  
>140.77060 32814.077060 328

## MODEL 9400



## Standard Resistor Oil Bath

- Stability <2 mK
- Quiet Operation
- Large Working Area
- Temperature Band Protection
- Thermoelectrically Cooled
- Adjustable Stirring Speed
- IEEE-488 and RS232

## MODEL INFORMATION

Measurements International's series of fluid baths are used for the maintenance of Standard Resistors and Shunts. The 9400 has been designed after compiling years of customer feedback on existing resistor oil baths. The result is a stable, quiet oil bath that can be used with the CCC and QHR due to its low electrical noise and low operating and maintenance costs.

The 9400 does not use a compressor and as such is very quiet both audibly and electrically. The one piece stainless steel tank is grounded and isolated from the anodized resistor shelf. Stirring is provided by two adjustable speed motors. The tank lid is insulated and sits atop a resistor drain shelf. The access opening is 25" by 8" to accommodate easy access for handling larger resistors.

The touch screen interface displays temperature and gives the user access to the PID for adjustment of set points, alarm settings and stirring speed. The exclusive design uses a proprietary temperature Band protection circuit.

The Bath is equipped with two drain/fill ports. An optional pump system, Model 9400-P can be used to fill or drain the bath and includes a filtration system to filter debris from the tank.

There are two 2" vertical conduit ports to for resistor cables and to minimize wicking. These ports allow the tank lid to remain in place for increased temperature stability. For easy connections to resistors and shunts see the Model 9400-I interconnect Panel. For holding your standard resistors securely.



The 9400 comes standard with IEEE-488 and Serial RS232 Interface and can be controlled via Measurements International's resistance bridge operating software.

## Specifications

### Operating

Stability <2 mK  
 Temperature 15-30 °C

### Size

Tank Size 27"x 30"x 13" Dp.  
 Tank Opening 25"x 8"  
 Usable Tank Area 27"x 11"x 12" Dp.  
 Outside Dim 34"x 22"x 38" Tall

### Fluid

Mineral Oil / Water 73 L / 19 Gal  
 Mass 73 Kg / 161 Lbs

### Controller

Input 4W RTD  
 Control Heat/Cool  
 Control Loop PID

### Safety

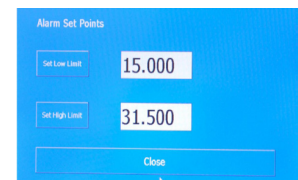
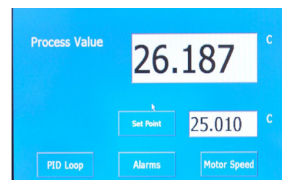
Level One Main Controller  
 Redundant high/low with sensor

### Power

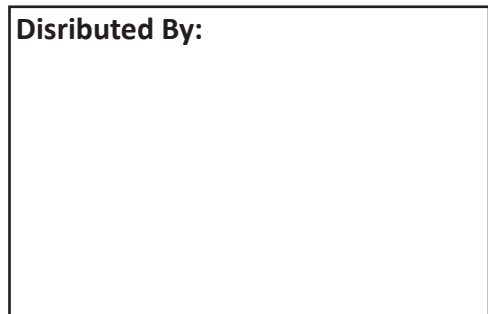
Voltage 120 V / 220 V - 50/60 Hz  
 Current 20 A / 15 A  
 Plug Configuration On Order

### Accessories:

9400-P - Oil Filtration and Pump  
 9400L-I - Resistor Interconnect Panel



Disributed By:



### Corporate Headquarters

**Measurements International**  
 PO Box 2359, 118 Commerce Drive  
 Prescott, Ontario, Canada K0E 1T0  
 Phone: (613) 925-5934  
 Fax: (613) 925-1195  
 Email: sales@mintl.com  
 Toll Free: 1-800-324-4988

### Worldwide Offices

**MI-USA**  
 Phone: (407) 706-0328  
 Fax: (407) 706-0318  
 Email: sales@mintl.com  
 Toll Free: 1-866-684-6393

**MI-China**  
 Phone: 86-10-64459890  
 Fax: 86-10-64459871  
 Email: sales@mintl.com

**MI-Europe**  
 Phone: (420) 731-440-663  
 Fax: (420) 572-572-358  
 Email: sales@mintl.com

