

ULTRA STABLE STANDARD RESISTOR MAINTENANCE BATH

(+5°C...+60°C)

OB-60/2 LT US

OB-100/2 LT US

Dedicated standard resistor baths with exceptional metrology performance:

- Uniformity and stability in mK range
- Unique vertical flow design
- Hinged transparent cover
 - Multiple access ports
- State of the art solution
 - Two bath sizes





Touch screen based controller with user friendly interface, history graph advance settings options RS-232, USB or Ethernet communication ports

Over temperature shut off device

Special double cylinder design with unique vertical flow across entire working volume

60L or 100L working chamber volume

Hinged transparent cover with multiple access options on fix backwall for wires

Full 4 side maintenance access

Extensive high performance chamber heat insulation

Air cooled conventional compressor based refrigeration system

Mobile standalone unite, with built in swivel wheels with brakes

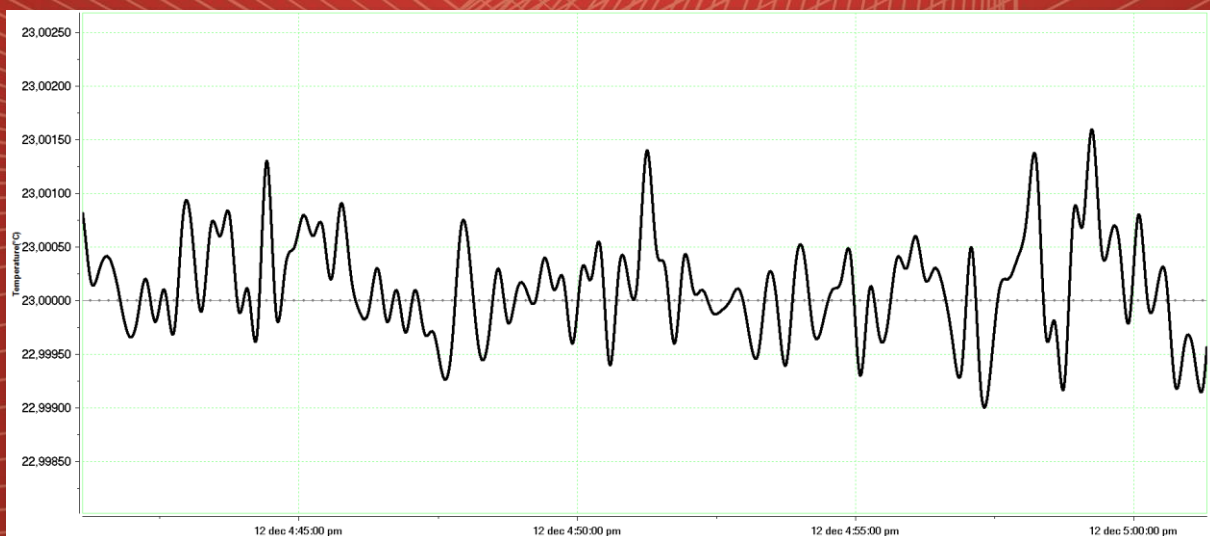
All exterior in stainless steel AISI 304 SB With rounded corners

Overflow drain with catch pot and fluid drain valve neatly hidden behind the front cover panel

Controller functions:



Bath's temperature stability graph at 23°C:



Technical data:

	OB-60/2 LTUS	OB-100/2 LTUS
		
External dimensions (WxHxD) in mm	1000 x 1035 x 550	1100 x 1035 x 650
Internal dimensions (WxHxD) in mm	550 x 320 x 268	640 x 400 x 268
Volume (L)	~60	~100
Temperature range (°C)	+5 ... +60	+5 ... +60
Temperature display resolution (°C)	0.001	0.001
Temperature set resolution (°C)	0.001	0.001
Temperature stability (°C)	±0.003 @ 23°C	±0.003 @ 23°C
Temperature uniformity (°C)	< ±0.007 @ 23°C	< ±0.007 @ 23°C
Temperature Control	PID	PID
Noise level (dBA)	< 58	< 58
Cooling	Compressor Cooling System	Compressor Cooling System
Power supply	230 V 50/60 HZ (± 10%)	230 V 50/60 HZ (± 10%)
Wattage (W)	3200	3200
Interface	RS 232 or USB or Ethernet	RS 232 or USB or Ethernet
Weight (kg)	~110	~125

*All performance data with fluid KDC 200.05

Ordering information and accessories:

Description	Part no.
Ultra stable standard resistor maintenance bath OB-60/2 LTUS	1644
Ultra stable standard resistor maintenance bath OB-100/2 LTUS	1643
USB interface	1466
Ethernet interface	1716
Evaluation report	1719
Monitoring and data collection software	104
Silicone oil fluid KDC 200.05 (-40°C..130°C)	645

