

AIR BATH

TK-105 US

TK-190 US

Refined solution for ultra-stable temperature environment 24/7, 365:

- Convenient Front Access – Side Access for Cables & Probes
- dry, clean, stable, silent, storage for standard resistors
 - Keeping the temperature within 10mK over days
 - perfect for checking temperature coefficients
 - Peltier driven technology
 - Cascade PID control





Touch screen based controller with user friendly interface, history graph advance settings options RS-232 or USB or Ethernet communication ports

All exterior in galvanized and powder coated steel RAL7035

Fully stainless steel chamber with 5 side double skin creating chamber in chamber environment for superior temperature uniformity

Extensive heat insulation shield on all chamber sides and doors

Closing mechanism with key lock

Fan for internal air circulation

Two point adjustable closing latch

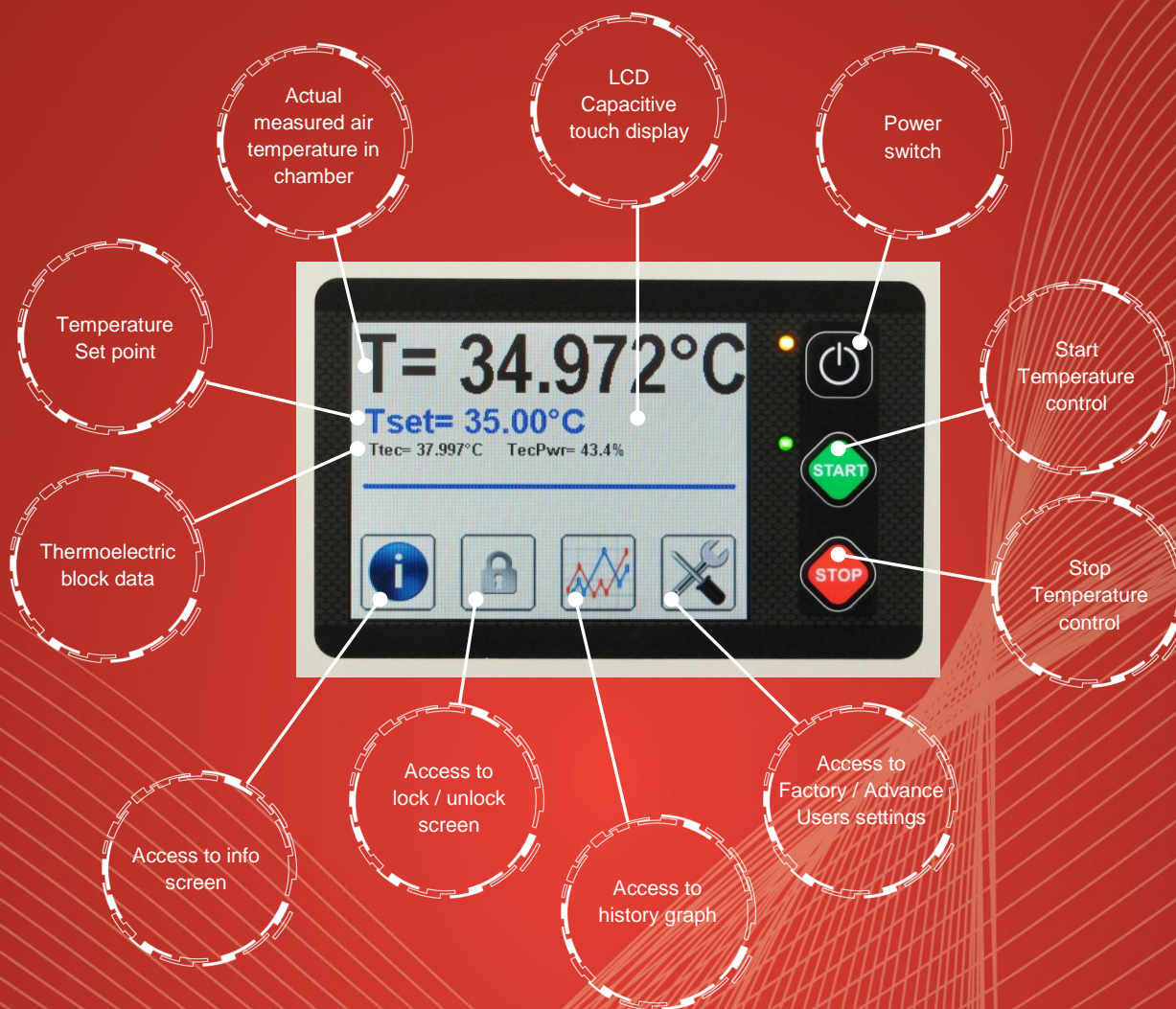
Height adjustable stainless steel wire shelves

2 x access port with sealing foam and closing flange Opening: 55x20mm

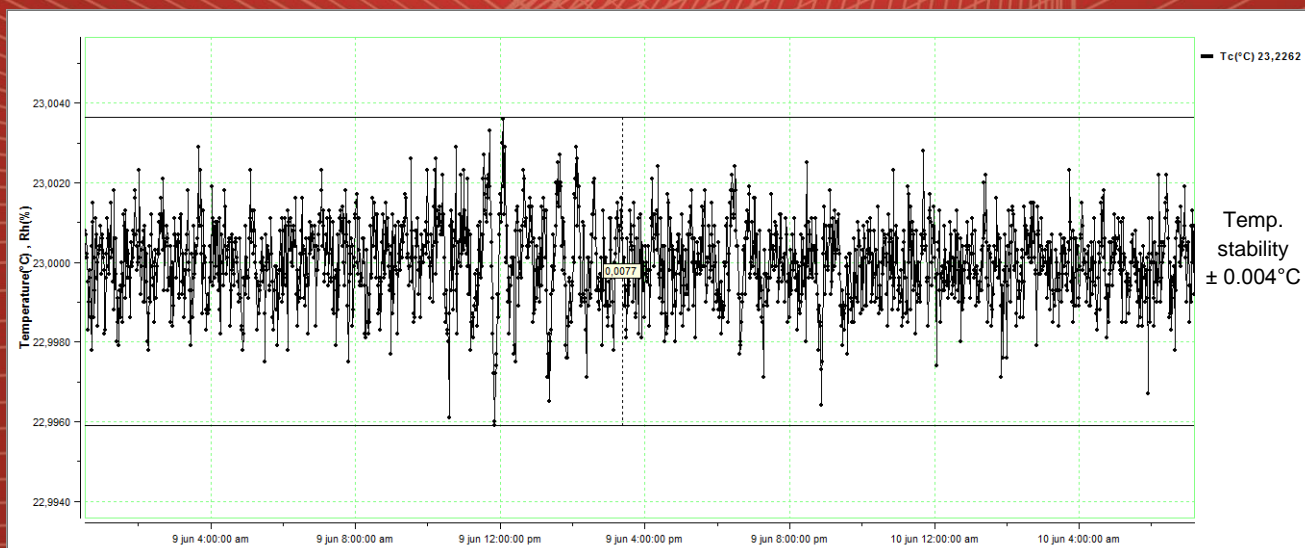
Soft profile silicone seal

Door switch for open door alarm

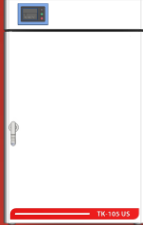

Controller functions:



Chamber temperature stability graph at 23°C:



Technical data:

	TK-105 US	TK-190 US
		
External dimensions (WxHxD) in mm	705 x 1130 x 700	875 x 1300 x 700
Internal dimensions (WxHxD) in mm	400 x 640 x 410	570 x 810 x 410
Volume (L)	~ 105	~ 190
Temperature range (°C)	+ 15 ... + 50	+ 15 ... + 50
Temperature display resolution (°C)	0.001	0.001
Temperature set resolution (°C)	0.1	0.1
Temperature stability (°C)	± 0.005 @ 23°C	± 0.005 @ 23°C
Temperature uniformity (°C)	± 0.01 @ 23°C ± 0.05 @ 15°C ± 0.10 @ 35°C	± 0.02 @ 23°C ± 0.08 @ 15°C ± 0.20 @ 35°C
Heating rate (+15°C to +50°C)	~ 110 min	~ 145 min
Cooling rate (+50°C to +15°C)	~ 110 min	~ 160 min
Temperature Control	Cascade PID	Cascade PID
Power supply	230 V 50/60 HZ (± 10%)	230 V 50/60 HZ (± 10%)
Wattage (W)	250	250
Interface	RS 232 or USB or Ethernet	RS 232 or USB or Ethernet
Shelve	2	3
Access port	2 x opening 55 x 20 mm	2 x opening 55 x 20 mm
Weight (kg)	~ 112	~ 150

Ordering information and accessories:

Description	Part no.
Ultra stable temp. chamber TK-105 US	1721
Ultra stable temp. chamber TK-190 US	1722
USB interface	1466
Ethernet interface	1716
Shelve TK-105 US	1725
Shelve TK-190 US	1727
Access port 55 x 20 mm	1732
Password protection	1718
Evaluation report	1719
Monitoring and data collection software	104
Trolley for TK-105 US	2611
Trolley for TK-190 US	2612

