

# PELTIER CLIMATIC CHAMBERS

PKK-50 (+ 8 °C ...+ 55 °C)

PKK-125 (+ 10 °C ...+ 50 °C)

Solely Peltier based temperature and humidity control:

- Stable, silent, vibration free climatic conditions
- Keeping superior temperature & Rh stability
- Convenient- Side Access for Cables & Probes
  - Cascade PID control





Touch screen based controller with user friendly interface, history graph, advance settings options RS-232 or USB or Ethernet communication ports

Door switch for open door alarm

All exterior in galvanized and powder coated steel RAL-7035

Water tank with illumination and safety level switch

Soft profile silicone seal

Fully stainless steel chamber with all rounded corners

Access port with both end plugs Ø 40 as standard, Ø 50 or Ø 90 as accessory

Temperature controlled observation window with illumination (As accessory)

Height adjustable stainless steel wire shelve, additional shelves as accessory

Extensive heat insulation shield on all chamber sides and doors

Two point adjustable closing latch

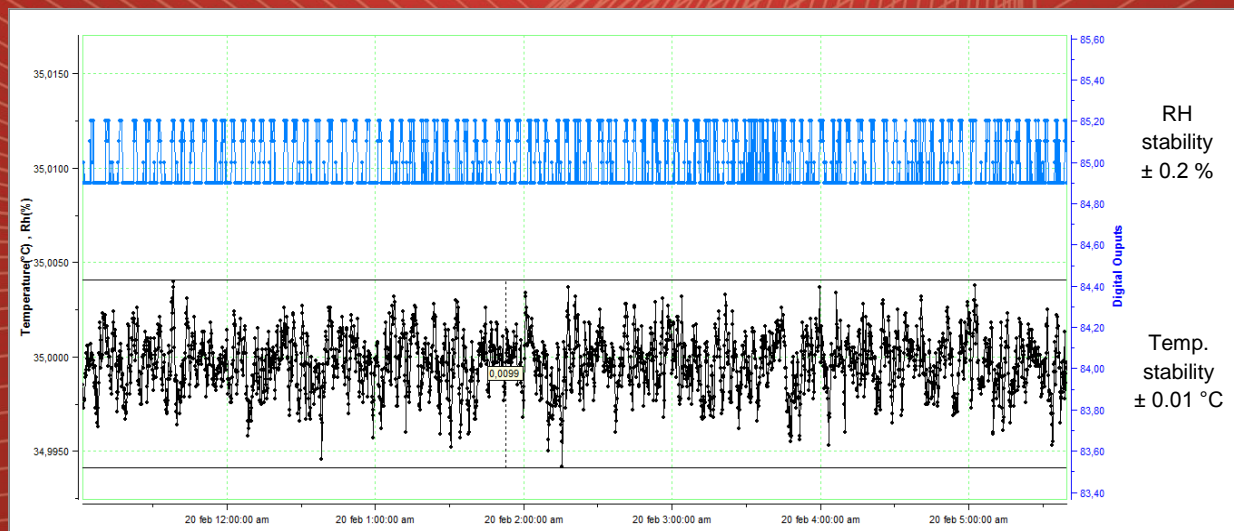
Fan for internal air circulation

Closing mechanism with key lock

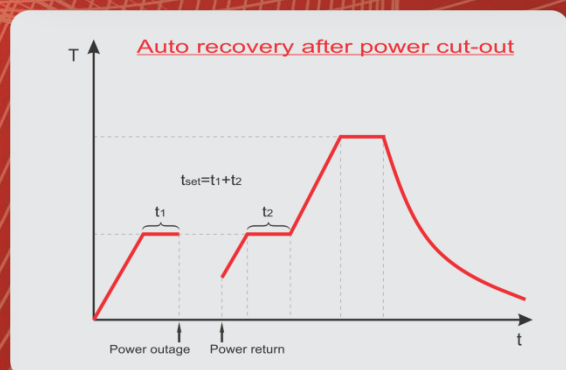
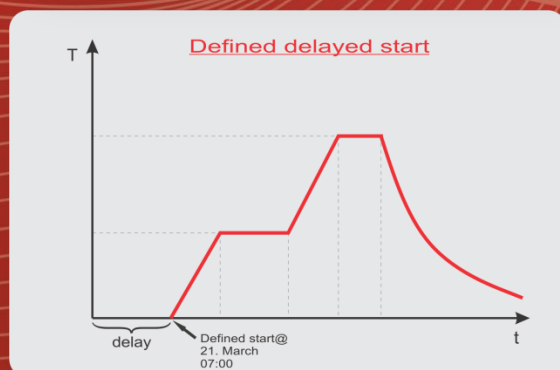
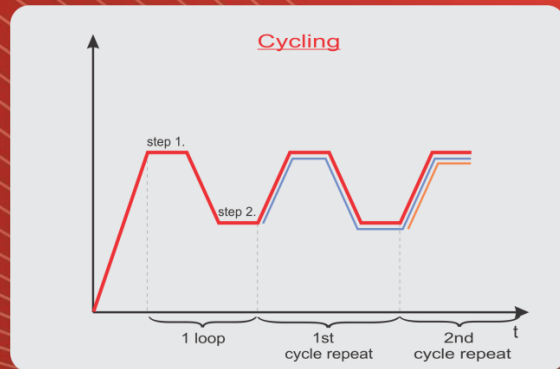
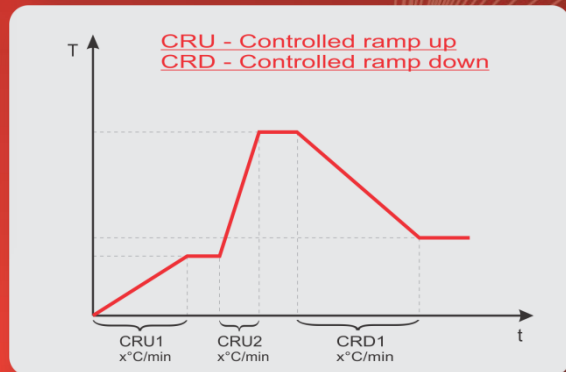
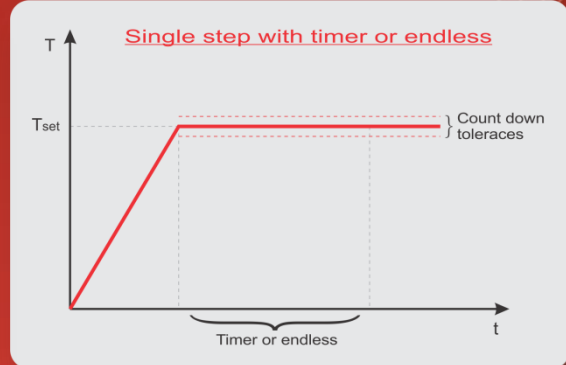
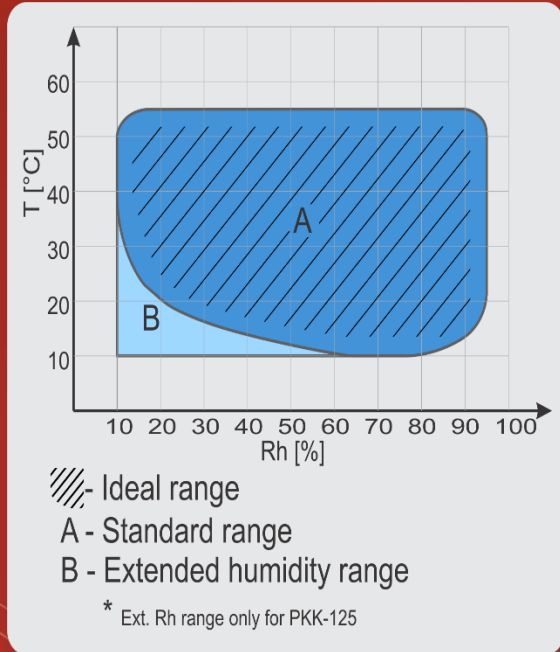
**User interface:**





**Chamber temperature & Rh stability at + 35 °C and 85 % Rh:**



## Controller functions:



### Technical data:

	PKK-50	PKK-125
		
External dimensions (WxHxD) (mm)	570 x 800 x 660	670 x 1135 x 755
Internal dimensions (WxHxD) (mm)	400 x 400 x 360	500 x 500 x 500
Volume (L)	~ 57	~ 125
Temperature range (°C)	+ 8 ...+ 55	+ 10...+ 50
Temperature display resolution (°C)	0.001	0.001
Temperature set resolution (°C)	0.1	0.1
Temperature stability (°C)	± 0.06 @ + 15 °C, 75 % Rh ± 0.04 @ + 20 °C, 60 % Rh ± 0.03 @ + 30 °C, 65 % Rh ± 0.06 @ + 50 °C, 75 % Rh ± 0.12 @ + 50 °C, 15 % Rh	± 0.08 @ + 15 °C, 75 % Rh ± 0.05 @ + 20 °C, 60 % Rh ± 0.05 @ + 30 °C, 65 % Rh ± 0.10 @ + 50 °C, 75 % Rh ± 0.10 @ + 50 °C, 15 % Rh
Temperature uniformity (°C)	± 0.25 @ + 15 °C, 75 % Rh ± 0.25 @ + 20 °C, 60 % Rh ± 0.48 @ + 30 °C, 65 % Rh ± 0.58 @ + 50 °C, 75 % Rh ± 1.30 @ + 50 °C, 15 % Rh	± 0.30 @ + 15 °C, 75 % Rh ± 0.25 @ + 20 °C, 60 % Rh ± 0.50 @ + 30 °C, 65 % Rh ± 0.60 @ + 50 °C, 75 % Rh ± 1.30 @ + 50 °C, 15 % Rh
Relative humidity range (%)	10...95	10...95
Relative humidity display resolution (%)	0.1	0.1
Relative humidity set resolution (%)	0.1	0.1
Relative humidity stability (%)	±0.3 @ + 15 °C, 75 % Rh ±0.3 @ + 20 °C, 60 % Rh ±0.3 @ + 30 °C, 65 % Rh ±0.3 @ + 50 °C, 75 % Rh ±0.3 @ + 50 °C, 15 % Rh	± 0.3 @ + 15 °C, 75 % Rh ± 0.3 @ + 20 °C, 60 % Rh ± 0.3 @ + 30 °C, 65 % Rh ± 0.3 @ + 50 °C, 75 % Rh ± 0.3 @ + 50 °C, 15 % Rh
Temperature control	PID	PID
Relative humidity control	Dew point humidity control	Dew point humidity control (dry air purge for extended Rh optional)
Power supply	230 V 50/60 Hz	230 V 50/60 Hz
Wattage (W)	500	500
Interface	RS 232 (USB or Ethernet as option)	RS 232 (USB or Ethernet as option)
Shelve	1 (max 4)	1 (max 6)
Shelve capacity (kg)	15	20
Max capacity (kg)	30	50
Access port (mm)	Ø 40 standard, Ø 50, Ø 90 (accessory)	Ø 40 standard, Ø 50, Ø 90 (accessory)
Noise (dBA) @ 1 m distance	< 50	< 50
Weight (kg)	~ 36	~ 75

### Ordering information and accessories:

Description	Part no.
Peltier climatic chamber PKK-50	2552
Peltier climatic chamber PKK-125	2607
USB interface	1466
Ethernet interface	1716
Shelve PKK-50	2553
Shelve PKK-125	2608
Access Port w. Plug Ø 40 mm right	2629
Access Port w. Plug Ø 50 mm right	608
Access Port w. Plug Ø 90 mm right	1731
Observation window with illumination	252
PKK-Tool (Software Monitoring & History)	1663
Password protection	1718
Evaluation report	1719
Trolley for PKK-50	2609
Trolley for PKK-125	2610
Extended Rh range via dry air purge (only for PKK-125)	1758

\*All performance in controlled environment ( $T_{ambient} = 22\text{ °C} \pm 3\text{ °C}$ )!

\*Accessories might affect performance!

